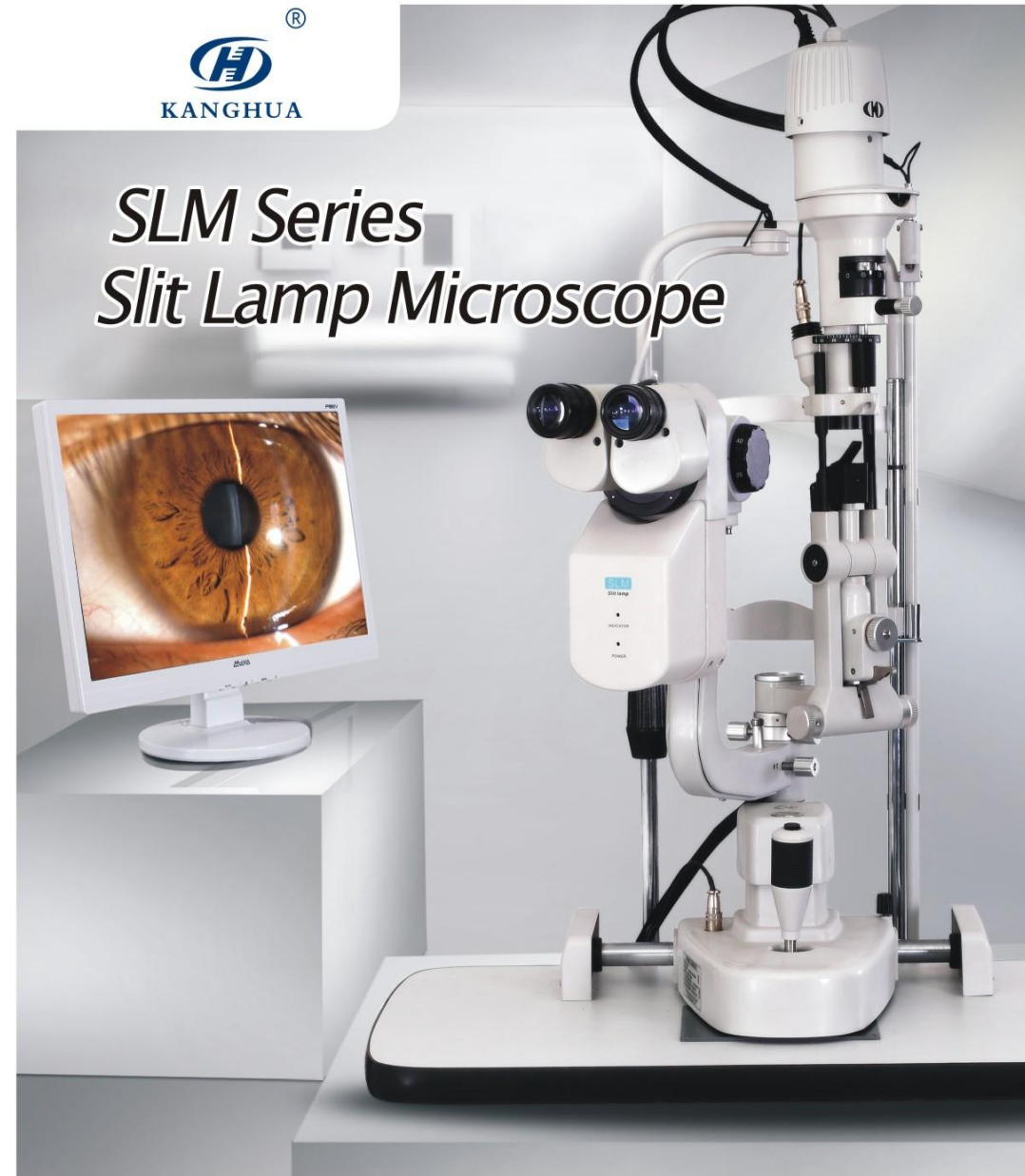


Auto—Perimeter
Visual Electro—Physiology
Fundus Camera
Fundus Camera & FFA
Slit Lamp
Digital Slit Lamp
Ophthalmic A/B Scanner

All Slit Lamps With Excellent Illumination
Slit, Technical Details, Optic Performance,
Perfect Mechanical Quality And Operation
Feeling.



Distributor:



We Make Vision More Wonderful
www.kanghuaa.com

SLM-1ER Slit Lamp

- Converging Optics Design;
- All lens Have Been Carried out Moisture Proof, Mould Proof and Coating Processing for Many Times, Which Prove Its Good Optic Performance in Different Weather Condition;
- German Industrial Bulb, High-Lightness without Harsh, Quick Heat Dispersion;
- International Standard Accessory Interface Which Can Connect Kinds of Ocular Posterior Segment Laser Adapter and Goldman Tonometer;



Technical Specification

Model	SLM-1ER
Microscope Type	Converging
Magnification Change Way	Deflector Rod
Eyepiece Magnification	10X 16X
Total Magnifications	10X 16X 25X
Diopter Adjustment	-5D ~+5D
Illumination	Three Steps (5 Steps and Step less Optional)
Slit Width	0-10MM Continuous (0-14MM Optional)
Slit Height	1-10MM Continuous (1-14MM Optional)
Slit Angle	0° - 180° Adjustable
Slit Inclination Angle	5° 10° 15° 20°
Light Spot Diameter	0.2mm, 2mm, 3mm, 5mm, 8mm, 10mm
Filter	Heat Absorption; Grey; Redfree; Cobalt Blue
Fixation	Red LED
Electrical	
Illumination Bulb	German OSRAM Halogen Tungsten Lamp
Input Voltage	110V/220V (+ 10%)
Input Power	60VA
Diffuse Lens	Yes
Preset Lens	Yes
Laser Interface	Optional
Applanation Tonometer Interface	Yes



SLM-2ER-L Slit Lamp

High Definition Eyepieces More Comfortable for Viewing

- High Sensitivity Professional Objective Lens;
- All Lens Have Been Carried out Moisture Proof, Mould Proof and Coating Processing for Many Times, Which Prove Its Good Optic Performance in Different Weather Condition;
- German Industrial Bulb, High Brightness without Harsh, Quick Heat Dispersion;
- International Standard Accessory Interface Which Can Connect Kinds of Ocular Posterior Segment Laser Adapter and Goldman Tonometer;
- Digital Upgrading Interface: Can Upgrade to Digital Slit Lamp;

Technical Specification

Model	SLM-2ER-L
Microscope Type	Galileo Parallel
Magnification Change Way	Drum Three Magnifications
Eyepiece Magnification	12.5X
Total Magnifications	10X ,16X ,25X,
Diopter Adjustment	-5D ~+5D
Illumination	Three Steps (5 Steps and Step less Optional)
Slit Width	0-10MM Continuous (0-14MM Optional)
Slit Height	1-10MM Continuous (1-14MM Optional)
Slit Angle	0° - 180° Adjustable
Slit Inclination Angle	5° 10° 15° 20°
Light Spot Diameter	0.2mm, 2mm, 3mm, 5mm, 8mm, 10mm
Filter	Heat Absorption; Grey; Redfree; Cobalt Blue
Fixation	Red LED
Electrical	
Illumination Bulb	German OSRAM Halogen Tungsten Lamp
Input Voltage	110V/220V (+ 10%)
Input Power	60VA
Diffuse Lens	Yes
Preset Lens	Yes
Laser Interface	Optional
Applanation Tonometer Interface	Yes



SLM-2ER Slit Lamp

High Definition Eyepieces More Comfortable for Viewing

- High Sensitivity Professional Objective Lens;
- All Lens Have Been Carried out Moisture Proof, Mould Proof and Coating Processing for Many Times, Which Prove Its Good Optic Performance in Different Weather Condition;
- German Industrial Bulb, High Brightness without Harsh, Quick Heat Dispersion;
- International Standard Accessory Interface Which Can Connect Kinds of Ocular Posterior Segment Laser Adapter and Goldman Tonometer;
- Digital Upgrading Interface: Can Upgrade to Digital Slit Lamp;



Technical Specification

Model	SLM-2ER
Microscope Type	Galileo Parallel
Magnification Change Way	Drum Five Magnifications
Eyepiece Magnification	12.5X
Total Magnifications	6X,10X ,16X ,25X,40X
Diopter Adjustment	-5D ~+5D
Illumination	Three Steps (5 Steps and Step less Optional)
Slit Width	0-10MM Continuous (0-14MM Optional)
Slit Height	1-10MM Continuous (1-14MM Optional)
Slit Angle	0° - 180° Adjustable
Slit Inclination Angle	5° 10° 15° 20°
Light Source	
Light Spot Diameter	0.2mm, 2mm, 3mm, 5mm, 8mm, 10mm
Filter	Heat Absorption; Grey; Redfree; Cobalt Blue
Fixation	Red LED
Electrical	
Illumination Bulb	German OSRAM Halogen Tungsten Lamp
Input Voltage	110V/220V (+ 10%)
Input Power	60VA
Diffuse Lens	Yes
Preset Lens	Yes
Laser Interface	Optional
Applanation Tonometer Interface	Yes

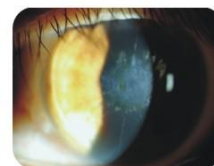
SLM-4ER (Series) Digital Slit Lamp

- Galileo Style;
- Five Steps Rotation Magnification;
- External Digital Camera;
- 10m Max Pixels Resolution;

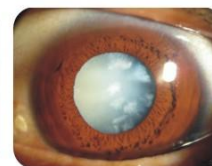


Technical Specification

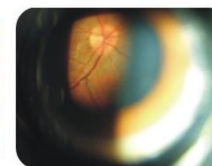
Model	SLM-4ER(Model A)	SLM-4ER(Model B)
Microscope Type	Galileo Parallel	
Digital	External Digital Slit Lamp	
Background Light	No	optional
Magnification Change Way	Drum Five Magnifications	
Eyepiece Magnification	12.5X	
Total Magnifications	6X, 10X, 16X, 25X, 40X	
Diopter Adjustment	-5D ~ +5D	
Illumination	Five Steps (Step less Optional)	
Slit Width	0-10MM Continuous (0-14MM Optional)	
Slit Height	1-10MM Continuous (1-14MM Optional)	
Slit Angle	0° - 180° Adjustable	
Slit Inclination Angle	5° 10° 15° 20°	
Light Spot Diameter	0.2mm, 2mm, 3mm, 5mm, 8mm, 10mm	
Filter	Heat Absorption; Grey; Redfree; Cobalt Blue	
Fixation	Red LED	
Electrical		
Illumination Bulb	German OSRAM Halogen Tungsten Lamp	
Input Voltage	110V/220V (+ 10%)	
Input Power	60VA	
Diffuse Lens	Yes	
Preset Lens	Yes	
Laser Interface	Optional	
Applanation Tonometer Interface	Yes	
Software system	NO	Image Capture Card
	NO	Professional Image Software



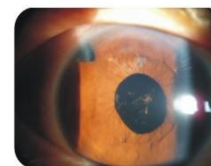
Keratopathy



Cataract



Fundus by Slit Lamp



Pigmentation



SLM-3ER Digital Slit Lamp Lamp (CCD Camera)

- Professional Digital Color Image Capturing System;
- Illness Case Storage Function: To Store Images inside Computer Automatically for Future Using;
- Background Light System: Parts Out of the Slit Light Emerge Clearly in the Dark Room;
- Professional Image Analyzing and Processing Function: Analyze, Measure and Calculate Focal Area so that to Study Ocular Surface, Cornea and Lens, Thus Provide Contrastive Analysis for the Clinical Effect;
- Professional Designing High Definition Slit Lamp Microsoft;
- Special Digital Images Optic Interface;



Technical Specification

Model	SLM-3ER
Microscope Type	Galileo Parallel
Digital	CCD camera
Background Light	Synchronous Flash; Coaxial Background Light
Magnification Change Way	Drum Five Magnifications
Eyepiece Magnification	12.5X
Total Magnifications	6X, 10X, 16X, 25X, 40X
Diopter Adjustment	-5D ~+5D
Illumination	Five Steps (Step less Optional)
Slit Width	0-10MM Continuous (0-14MM Optional)
Slit Height	1-10MM Continuous (1-14MM Optional)
Slit Angle	0° - 180° Adjustable
Slit Inclination Angle	5° 10° 15° 20°
Light Spot Diameter	0.2mm, 2mm, 3mm, 5mm, 8mm, 10mm
Filter	Heat Absorption; Grey; Redfree; Cobalt Blue
Fixation	Red LED
Electrical	
Illumination Bulb	German OSRAM Halogen Tungsten Lamp
Input Voltage	110V/220V (+ 10%)
Input Power	60VA
Diffuse Lens	Yes
Preset Lens	Yes
Laser Interface	Optional
Applanation Tonometer Interface	Yes



Corneal Transplantation



Anterior Chamber Angle



Iris



Macula Hole

SLM-3ER Digital Slit Lamp (Digital Camera)

Integrated Camera Design New Appearance New Type

- Professional Digital Color Image Capturing System;
- Illness Case Storage Function: To Store Images inside Computer Automatically for Future Using;
- Background Light System: Parts Out of the Slit Light Emerges Clearly in the Dark Room;
- Professional Image Analyzing and Processing Function: Analyze, Measure and Calculate the Focal Area so that to Study Ocular Surface, Cornea and Lens, Thus Provide Contrastive Analysis for the Clinical Effect;
- Professional Designing High Definition Slit Lamp Microscope Special Digital Images Optic Interface;



Technical Specification

Model	SLM-3ER
Microscope Type	Galileo Parallel
Digital	Internal Professional Digital Capturing System
Background Light	Optional
Magnification Change Way	Drum Five Magnifications
Eyepiece Magnification	12.5X
Total Magnifications	6X, 10X, 16X, 25X, 40X
Diopter Adjustment	-5D ~+5D
Illumination	Five Steps (Step less Optional)
Slit Width	0-10MM Continuous (0-14MM Optional)
Slit Height	1-10MM Continuous (1-14MM Optional)
Slit Angle	0° - 180° Adjustable
Slit Inclination Angle	5° 10° 15° 20°
Light Spot Diameter	0.2mm, 2mm, 3mm, 5mm, 8mm, 10mm
Filter	Heat Absorption; Grey; Redfree; Cobalt Blue
Fixation	Red LED
Electrical	
Illumination Bulb	German OSRAM Halogen Tungsten Lamp
Input Voltage	110V/220V (+ 10%)
Input Power	60VA
Diffuse Lens	Yes
Preset Lens	Yes
Laser Interface	Optional
Applanation Tonometer Interface	Yes



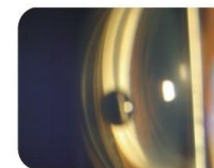
Corneal Neovascularization



Conjunctiva



Lens



Anterior Chamber Angle