



2RT®

2RT® is a breakthrough laser therapy that has the potential to positively influence the lives of millions of people suffering from retinal disease.





Retinal Rejuvenation. Naturally, from Ellex.

2RT[®] is a nanosecond laser therapy that stimulates a natural, biological healing response in the eye to treat degenerative retinal diseases, including age-related macular degeneration (AMD). A breakthrough treatment approach, 2RT[®] retains the therapeutic benefits of laser therapy whilst eliminating the thermal tissue damage inherent in conventional retinal laser therapy.

2RT: RETINAL REJUVENATION THERAPY

Clinical and scientific studies have demonstrated that 2RT[®], a restorative non-thermal laser therapy, offers the potential to improve retinal function and to halt or delay the degenerative processes that cause some retinal diseases.^{1,2,3,4}

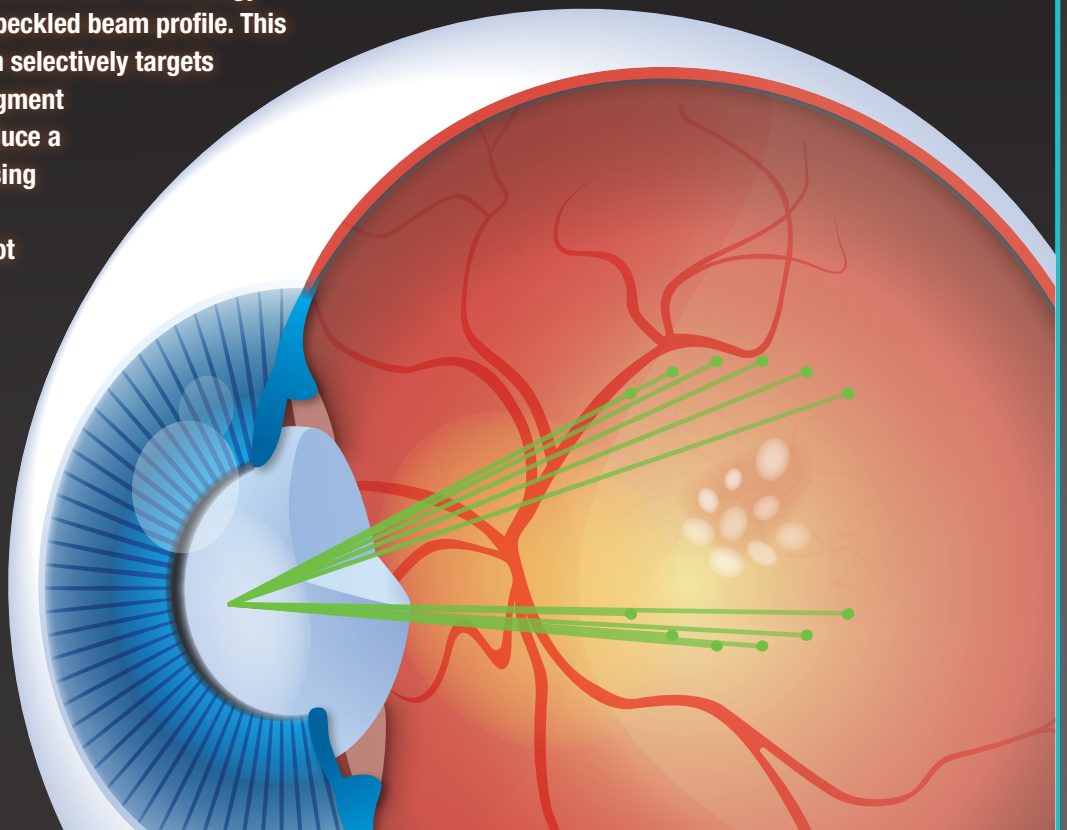
In a pilot study by Professor Robyn Guymer, MB, BS PhD, FRANZCO and colleagues, 2RT[®] was shown to reduce the area and volume of drusen from a baseline of 5% or more, and to deliver a functional improvement in some high-risk early AMD patients.¹

In contrast to conventional retinal laser therapy, which can cause permanent collateral damage to the sensitive structures of the eye, 2RT[®] protects the retina from thermal damage. It also offers the potential to apply treatment earlier in the disease process with the aim of slowing retinal degeneration, thereby eliminating or delaying the risk of vision-threatening complications associated with the late-stage of retinal disease.

2RT[®] utilizes solid-state, nanosecond laser technology delivered through a patented speckled beam profile. This proprietary treatment approach selectively targets organelles within the retinal pigment epithelium (RPE) in order to induce a therapeutic effect without causing collateral damage. 2RT[®] also features a large 400 micron spot size, instead of a 50 micron spot size commonly used in conventional retinal laser therapy.

During the procedure, a series of laser spots are applied superiorly and inferiorly, inside the temporal retinal vascular arcades.

- 2RT[®] offers the potential to halt or delay the degenerative processes that cause retinal disease.
- 2RT[®] utilizes proprietary, solid-state nanosecond laser technology.
- All of the 2RT[®] laser energy is designed to stay within the targeted RPE cells.
- 2RT[®] uses approximately 500 times less energy than retinal photocoagulation.
- 2RT[®] induces a mononuclear cell response, including the stimulation of microglia.

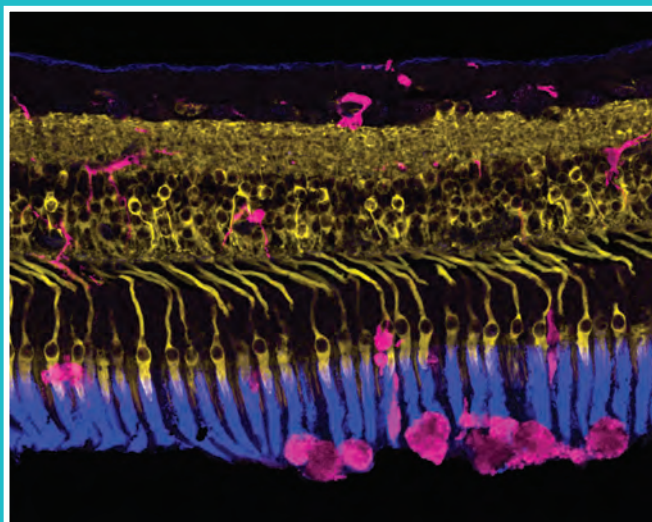


2RT: TAKING THE HEAT OUT OF PHOTOCOAGULATION

Ellex's proprietary, patented 2RT® technology features a speckled beam profile which exclusively targets selected organelles within the retinal pigment epithelium (RPE).

The application of 2RT® to the RPE results in the formation of microbubbles around melanosomes.⁵ These microbubbles expand and then coalesce, causing intracellular damage. A key aspect of the 2RT® treatment approach is that cell damage is confined within the targeted RPE cells and does not extend to the neighboring cells. A process of extracellular signaling occurs in response to the selected death of the targeted RPE cells, which causes the neighboring RPE cells to migrate and proliferate into the cell space vacated by these dead RPE cells.

This stimulates a process of cell division and growth, which improves permeability of Bruch's membrane, and thereby restores the transport of fluid across Bruch's membrane.^{2,6} As a result, the RPE is rejuvenated – and without damage to the overlying neurosensory retina.



Research conducted by Professor Erica L. Fletcher MScOptom, PhD and colleagues has shown that 2RT® induces a mononuclear cell response, including the stimulation of microglia. Microglia, the resident immune cell of the central nervous system, is known to remove cellular debris and facilitate healing.² In the above image, taken five days following the application of 2RT®, retinal microglia are shown extending their cell processes toward the laser treatment site.

Image courtesy of Professor Erica L. Fletcher MScOptom, PhD.

MECHANISM OF ACTION

- | | |
|----|--|
| 1. | 2RT selectively targets individual RPE cells. |
| 2. | Microbubbles around melanosomes expand, coalesce and cause intracellular damage. |
| 3. | Intracellular structure damaged, leading to individual RPE cell death. |
| 4. | Extracellular and Intracellular signalling occurs from neighboring RPE cells: neighboring cells migrate and proliferate into vacant cell space and RPE cells divide to produce a new RPE cell. |
| 5. | Microglial processes extending towards lasered site without any classical signs of stress (gliosis). |
| 6. | Permeability of Bruch's membrane improved and transport of fluid across Bruch's membrane restored. |

2RT FOR EARLY AMD

As the eye ages, the permeability of Bruch's membrane is reduced, inhibiting its ability to remove and exchange fluid with the addition of accumulating waste deposits under the macula, known as drusen and pigmentary abnormalities.⁷ Current estimates suggest that by age 40 the flow is reduced to approximately 50% of what it is in infants. By age 80, it is reduced to a small fraction.⁸

Reduced fluid outflow across Bruch's membrane has been shown to play a central role in the development of retinal pathologies. In addition, reduced nutrition and oxygen may promote neovascularization by stressing retinal cells to the point that they secrete endothelial growth factors and other enzymes that are part of the body's wound healing process.

Targeted at the RPE and Bruch's membrane, 2RT[®] stimulates a biological healing response in the eye which improves permeability of Bruch's membrane and thereby restores the transport of fluid across Bruch's membrane. By restoring metabolite flow to retinal cells, 2RT[®] may also reduce the cell production of vascular

endothelial growth factors and other precursors of neovascularization.

To date, 2RT[®] is the first and only treatment that has demonstrated the potential to produce bilateral improvements in macular function and appearance and function in early AMD patients.

Conventional AMD treatments, such as ongoing intraocular injections of anti-vascular endothelial growth factor (anti-VEGF) medications, address late-stage complications associated with the disease. In contrast, 2RT[®] offers the potential to apply treatment earlier in the disease process and to intervene at the level of the underlying pathology, preventing progression to wet AMD.

“ With 2RT[®] the aim is to treat the causes of the disease before vision loss occurs. ”

2RT FOR CSME

Clinical studies have shown 2RT[®] to be as effective as retinal photocoagulation in reducing cystoid macular edema secondary to diabetic retinopathy. Unlike retinal photocoagulation, however, which results in localized destruction of photoreceptors, thereby leading to scotoma and architectural loss to overall tissue, 2RT[®] protects the photoreceptors, and therefore retinal function, from thermal damage. It also uses approximately 500 times less energy than retinal photocoagulation: the huge reduction in radiant exposure proportionately reduces the risk of damage to all aspects of retinal function.³

Historically, retinal photocoagulation has been used to reduce the rate of visual acuity loss from diabetic macular edema. The trade-off is destruction of photoreceptor cells. In contrast, 2RT[®] selectively targets the melanosome organelles of the RPE to stimulate a process of intra-cellular micro-bubble formation, which helps to increase fluid and metabolite flow across Bruch's membrane without causing damage to the retina.

“ 2RT[®] uses approximately 500 times less energy than retinal photocoagulation. ”



ACCESSORIES

Tablet Interface

The intuitive tablet interface allows for easy adjustment of key treatment parameters.

Total Solution™ Table

The 2RT® Total Solution™ table offers improved physician ergonomics and patient access in order to best meet the needs of ophthalmic offices, ambulatory surgery centers and hospital outpatient clinics.



INDICATIONS FOR USE

AGE-RELATED MACULAR DEGENERATION

2RT® (Retinal Rejuvenation Therapy) is indicated in patients with early Aged-Related Macular Degeneration (AMD) where it can produce bilateral improvements in macular appearance and function. Refer to the “2RT Early AMD Treatment Guidelines” for more information.

CLINICALLY SIGNIFICANT MACULAR EDEMA

2RT® (Retinal Rejuvenation Therapy) is indicated for the treatment of Clinically Significant Macular Edema (CSME) due to Diabetic Retinopathy.

Refer to the “2RT CSME Treatment Guidelines” for more information.

SPECIFICATIONS

Laser Source	Q-switched Nd: YAG laser, frequency doubled
Wavelength	532 nm (Green)
Energy Range	Minimum: 0.1 mJ / Maximum: 0.6 mJ 0.10-0.30 in 0.02 steps 0.30-0.60 in 0.05 steps
Pulse Duration	3 nanoseconds
Pulse Repetition	No less than 500 ms for 20 continuous shots
Spot Size	400 microns
Aiming Beam	red 635 nm, adjustable intensity
Magnification	6x, 10x, 16x, 25x, 40x
Electrical Requirements	100–240 VAC, 50/60 Hz, 800 VA
Weight	35 kg, 77 lbs. (as shown)
Dimensions (HxWxD)	58 x 98 x 49 cm, 23 x 39 x 19 inches (laser system only)
Standard Accessories	Tablet, Total Solution™ table, footswitch, eye safety filter, safety glasses, laser safety sign, dust cover
Optional Accessories	Beam splitter, co-observation tube, 35mm camera adapter, video camera adapter, laser lenses

SPECIFICATIONS ARE SUBJECT TO CHANGE WITHOUT NOTICE.

© 2016, Ellex Medical Pty Ltd. 2RT and Total Solution are trademarks of Ellex Medical Pty Ltd. Ellex is a registered trademark of Ellex Medical Pty Ltd. International patents pending and/or granted. E&OE. PB00024A.

2RT® has a CE Mark (Conformité Européenne) indication of use in patients with early AMD where it can produce bilateral improvements in macular appearance and function. Not available for sale in the USA for the indication of Early AMD. 2RT® has a CE Mark (Conformité Européenne) and US Food and Drug Administration (FDA) (510k) Market release for the treatment of Clinically Significant Macula Edema (CSME).



REFERENCES:

1. Guymer, R.H., et al., Nanosecond-laser application in intermediate AMD – 12-month results of fundus appearance and macular function. Clin Experiment Ophthalmol. 2013 Oct 3. doi: 10.1111/ceo.12247.
2. Jobling, A.I., et al. Nanosecond laser therapy reverses pathological and molecular changes in age related macular degeneration without retinal damage. Federation of American Societies of Experimental Biology, November 2014; 28 (11).
3. Casson, R.J., et al., Pilot randomized trial of a nanopulse retinal laser versus conventional photocoagulation for the treatment of diabetic macular oedema. Clin Experiment Ophthalmol. 2012 Aug;40(6):604-10.
4. Pelosini, L.P., et al., RETINA REJUVENATION THERAPY FOR DIABETIC MACULAR EDEMA A Pilot Study. RETINA 0:1-11, 2012.
5. Brinkman, R., et al., Origin of Retinal Pigment Epithelium Cell Damage by Pulsed Laser Irradiance in the nanosecond to Microsecond Time Regimen. Lasers Surg. Med. 27:451-464,2000.
6. Zhang, J.J., et al. Laser-Mediated Activation of Human Retinal Pigment Epithelial Cells and Concomitant Release of Matrix Metalloproteinases. Invest Ophthalmol Vis Sci 2012;53:2928-2937.
7. Moore, D.J., et al., Age-related variation in the hydraulic conductivity of Bruch's membrane. Invest Ophthalmol Vis Sci. 1995;36:1290-1297
8. Hussain, A.A., et al., Macromolecular diffusion characteristics of ageing human Bruch's membrane: implications for age-related macular degeneration (AMD). Exp Eye Res. 2010;3:207-214.



ellex.com

Headquarters

82 Gilbert Street
Adelaide, SA, 5000 AUSTRALIA
+61 8 8104 5200

Japan

3F, 3-2-22 Harumi Chuo-ku
Tokyo 104-0053 JAPAN
+81 3 5859 0470

USA

7138 Shady Oak Road
Minneapolis, MN, 55344 USA
800 824 7444

Germany

ZPO floor 1, Carl-Scheele-Str.16
12489 Berlin GERMANY
+49 30 6392896 00

Australia

82 Gilbert Street
Adelaide, SA, 5000 AUSTRALIA
+61 8 8104 5264

France

La Chaufferie - 555 chemin du bois
69140 Rillieux la Pape FRANCE
+33 4 8291 0460